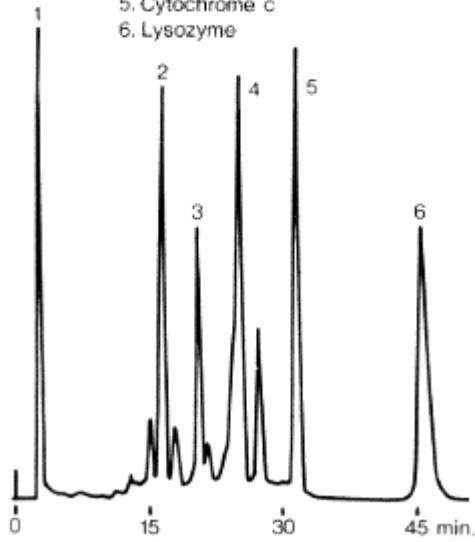


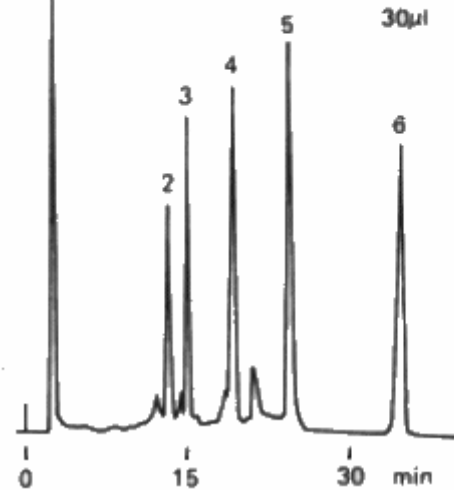
(CM-825)

Sample: 90µl

1. Myoglobin
2. Trypsinogen
3. Ribonuclease A
4. α-Chymotrypsinogen A
5. Cytochrome c
6. Lysozyme

**(SP-825)**

Sample: 1. Myoglobin 0.03%
 2. Trypsinogen 0.08%
 3. Ribonuclease A 0.17%
 4. α-Chymotrypsinogen A 0.08%
 5. Cytochrome c 0.08%
 6. Lysozyme 0.05%



Sample :

1. Myoglobin, 2. Trypsinogen, 3. Ribonuclease A, 4. alpha Chymotrypsinogen A, 5. Cytochrome c, 6. Lysozyme

Columns	: (Left) Shodex IEC CM-825 (8.0mmID*75mm) (Right) Shodex IEC SP-825 (8.0mmID*75mm)
Eluent	: (A); 20mM Sodium phosphate buffer (pH7.0) (B); (A) + 0.5M NaCl Linear gradient: 0min to 60min, (A) to (B)
Flow rate	: 1.0mL/min
Detector	: UV (280nm)
Column temp.	: Room temp.